

For Immediate Release: 4 December 2006
 Media Contact: Adam Bennett, Media & Public Relations Manager
 a.bennett@mtc.com.au, (03) 9684 4527 or 0411 780 516



Melbourne Theatre Company presents

Don's Party

By David Williamson



Glenn Hazeldine



Anita Hegh



Colin Lane



Steve Le Marquand



Mandy McElhinney



Travis McMahon



Rhys Muldoon



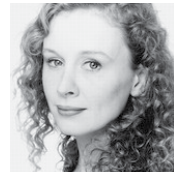
Christopher Pitman



Felicity Price



Jacinta Stapleton



Alison Whyte

Director Peter Evans
 Set & Costume Designer Dale Ferguson
 Lighting Designer Matt Scott
 Composer & Sound Designer Basil Hogios

Previews from 8 January 2007
 Opens Thursday 11 January 2007
 At the Arts Centre Playhouse until 10 February 2007
 (Sydney season at the Opera House Drama Theatre from 14 September 2007*)

"David Williamson builds good comedy on the basis of an infallible ear for the Oz vernacular, and creates superb theatre by orchestrating his dialogue from elements that trip from the tongues of likeable fits and misfits ... DON'S PARTY holds up a wickedly articulate mirror against the flight of enamel geese on the wall of an Australian house."
 – The Canberra Times

"On almost every level of theatre DON'S PARTY is superbly effective. It is bold in form ... Remorselessly and brilliantly the play lifts up all those ticky-tacky houses on the hillside that these people have pulled over themselves. The superior pond life thus exposed is paraded in front of us with enormously rich and Rabelaisian comic flair" - National Times

"On the strength of DON'S PARTY ... I have no doubt that Mr Williamson is the best playwright working in Australia, and one of the best in the world ... there isn't a line, and not a character, that hasn't the ring - just off-key - of one part of Australia, larger than life ... it is very, very funny."
 – The Sydney Morning Herald

This long-awaited revival of David Williamson's classic social satire shows why he has commanded our stages for more than 30 years.

MTC's new Associate Director Peter Evans (*The Give and Take, Dumb Show, The Daylight Atheist*) has assembled a cast of true blue, rib-tickling talents: Glenn Hazeldine (*BackBerner*), AFI Award-winner Anita Hegh, Colin Lane (Lano & Woodley), Steve Le Marquand (*He Died with a Falafel in His Hand*), Mandy McElhinney (*Comedy Inc*), Travis McMahon (*Last Man Standing*), Rhys Muldoon (*Grass Roots*), Christopher Pitman (*The Sapphires*), Felicity Price (*Unfolding Florence*), Jacinta Stapleton (*Stingers*) and Logie-winner Alison Whyte.

In 1973, *DON'S PARTY* was the play in which Williamson found his satirical line and length. Today, with another Liberal Party Government comfortably ensconced and Labor in disarray, the play seems timely and ready for a fresh audience.

On the night of the 1969 Federal election, Don (Steve Le Marquand) throws a party for his mates to watch the returns come in. With all the pre-election polls swinging their way, the blokes (Glenn Hazeldine, Colin Lane, Travis McMahon, Rhys Muldoon, Christopher Pitman) and their wives (Anita Hegh, Mandy McElhinney, Felicity Price, Jacinta Stapleton, Alison Whyte) settle in for a booze-fuelled celebration of the inevitable and long-awaited Labor win. But as the night wears on and victory ebbs away, the alcohol and the thwarted hopes combine dangerously.

Performance Schedule: Mon & Tue 6.30pm (8 & 9 Jan 8pm), Wed 1pm & 8pm, Thu & Fri 8pm, Sat 4pm & 8.30pm
Bookings: Ticketmaster 1300 136 166 or visit www.mtc.com.au
Prices: \$16 - \$72.10

*A co-production with Sydney Theatre Company, *DON'S PARTY* tours to the Sydney Opera House Drama Theatre from 14 September as part of STC's 2007 season.